

PHOENIX RELOCATION GUIDE



GRACE TUNG

Sales Associate

Commercial | Residential

P: (602) 697-8776

gracetung@cox.net

I CAN SPEAK CHINESE

我可以讲中文



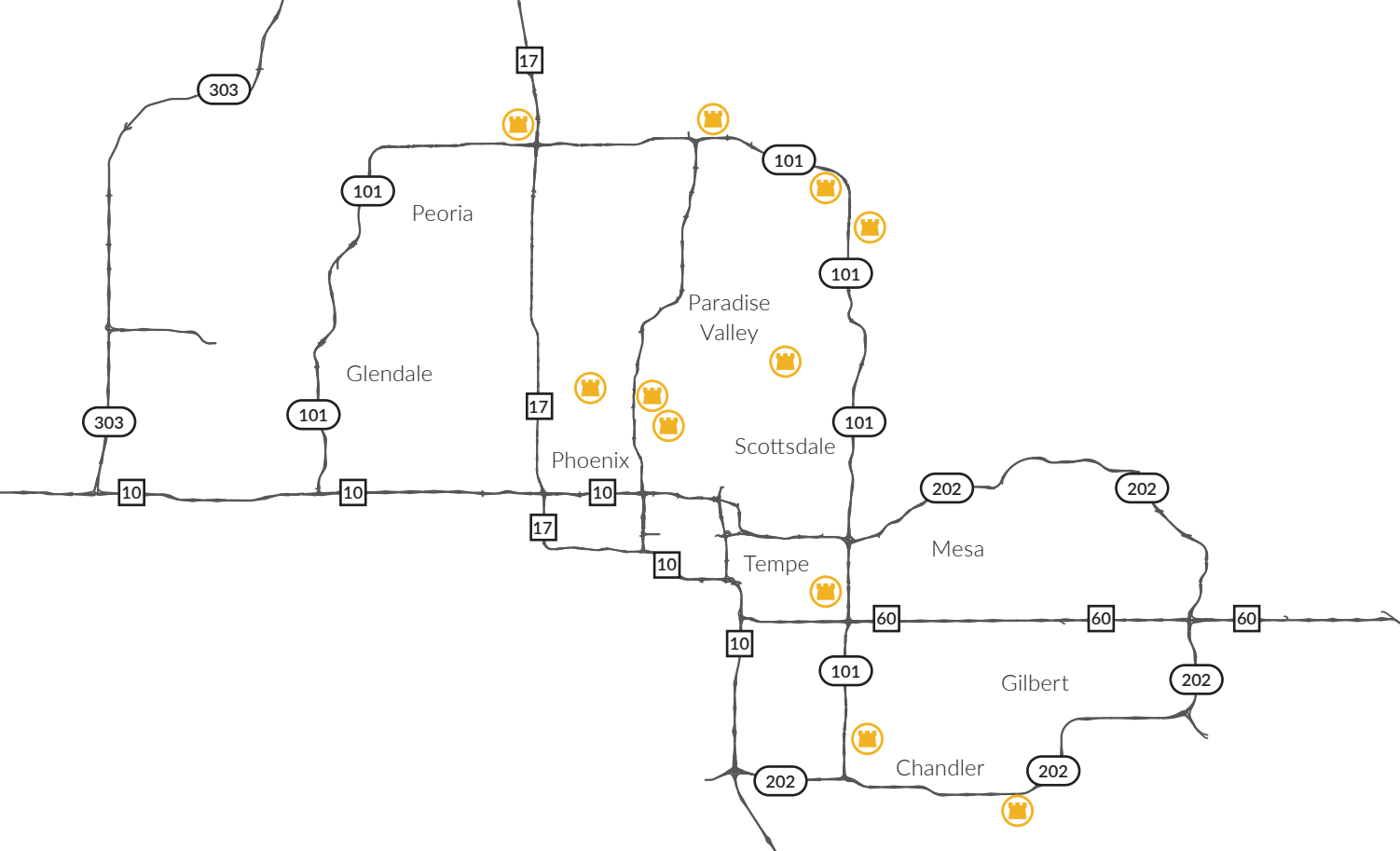
FORTUNE 500 CLUB





TABLE OF CONTENTS

Table Of Contents	1
Chicago Title Agency Locations	2
Weather & Climate	3
Transportation	4
Phoenix Metro Valley Map	5
Employment	6
Schools	7-11
Restaurants	
Mexican	12
American	13
Asian	14
Sushi	15
Pizza	16
Italian	17
BBQ	18
Steakhouse	19
Shopping	20
Gyms	21
Outdoor Activities	22
Desert Dangers	23
Entertainment Districts	24
Sports	25
Golf Courses	26
Art & Culture	27



CHICAGO TITLE AGENCY LOCATIONS

EAST VALLEY

Tempe

1400 E. Southern Ave. #910
(480) 874-7045

Chandler

2121 W. Chandler Blvd. #200
(480) 899-0201

Gilbert

335 E. Germann Rd. #101
(480) 539-6854

WEST VALLEY

Northwest

2730 W. Agua Fria Pkwy. #203
(623) 434-9205

CENTRAL PHOENIX

Esplanade

2525 E. Camelback Rd. #134
(602) 667-1046

Biltmore

2390 E. Camelback Rd. #120
(602) 553-4806

DESERT RIDGE

Desert Ridge

20830 N. Tatum Blvd, #399
Phoenix, AZ 85050
(602) 667-1230

SCOTTSDALE

Scottsdale

8800 E. Raintree Dr. #230
(480) 675-4899

North Scottsdale

8501 E. Princess Dr. #110
(480) 538-1940

Scottsdale Paradise Valley

6710 N. Scottsdale Rd. #100A
(602) 667-1400

Administration

6710 N. Scottsdale Rd. #100
(602) 667-1000

ANNUAL AVERAGE TEMPERATURE

Low	Month	High
46°	January	67°
49°	February	71°
54°	March	78°
61°	April	86°
70°	May	95°
79°	June	104°
85°	July	106°
84°	August	104°
77°	September	99°
65°	October	88°
53°	November	75°
46°	December	66°

ARIZONA WEATHER PHENOMENAS

MONSOON

A shift in wind patterns that results in an increased amount of precipitation. Results of a monsoon include blowing dust to severe thunderstorms and flash flooding.

HABOOB

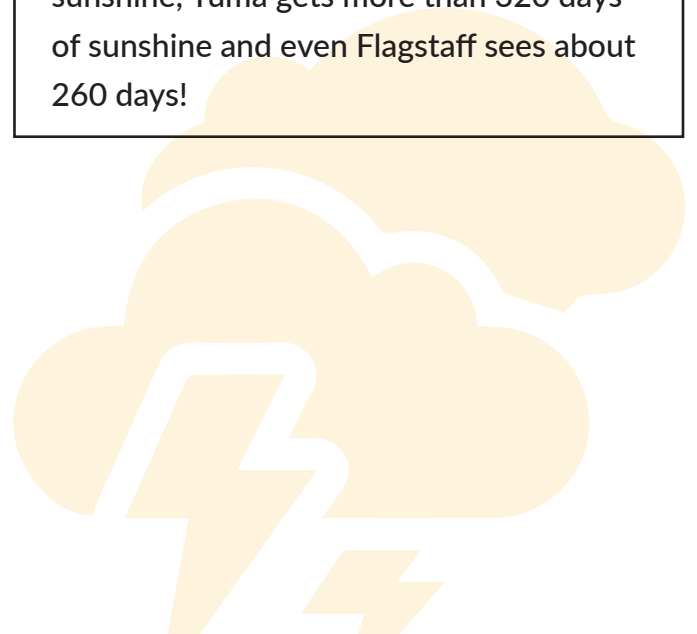
An occurrence where a thunderstorm produces a down and outward force of air, causing dust, sand and other debris to be sucked into a wall-like cloud. In extreme cases, visibility drops to zero.

DUST DEVIL

A dust-filled whirlwind resembling a tornado but are usually smaller and less intense.

DID YOU KNOW

On average, Phoenix gets 300 days of sunshine, Yuma gets more than 320 days of sunshine and even Flagstaff sees about 260 days!



MAJOR HIGHWAYS

- Loop 101
- Loop 202
- Loop 303
- SR-51
- I-17
- I-10
- SR-143

JUST A DRIVE AWAY

Puerto Peñasco, Mexico	215 miles
Las Vegas, Nevada	295 miles
San Diego, California	355 miles
Los Angeles, California	370 miles
El Paso, Texas	433 miles
Salt Lake City, Utah	660 miles
San Francisco, California	755 miles
Denver, Colorado	820 miles

AIRPORTS

Phoenix Sky Harbor International Airport

3400 E. Sky Harbor Boulevard, Phoenix
(602) 273-3300 | Code: PHX

Phoenix-Mesa Gateway Airport

6033 S. Sossaman Road, Mesa
(480) 988-7600 | Code: AZA

Scottsdale Airport

15000 N. Airport Drive, Scottsdale
(480) 312-8100 | Code: SCF

BUSES AND LIGHT RAILS

Valley Metro

(602) 253-5000 | www.valleymetro.org

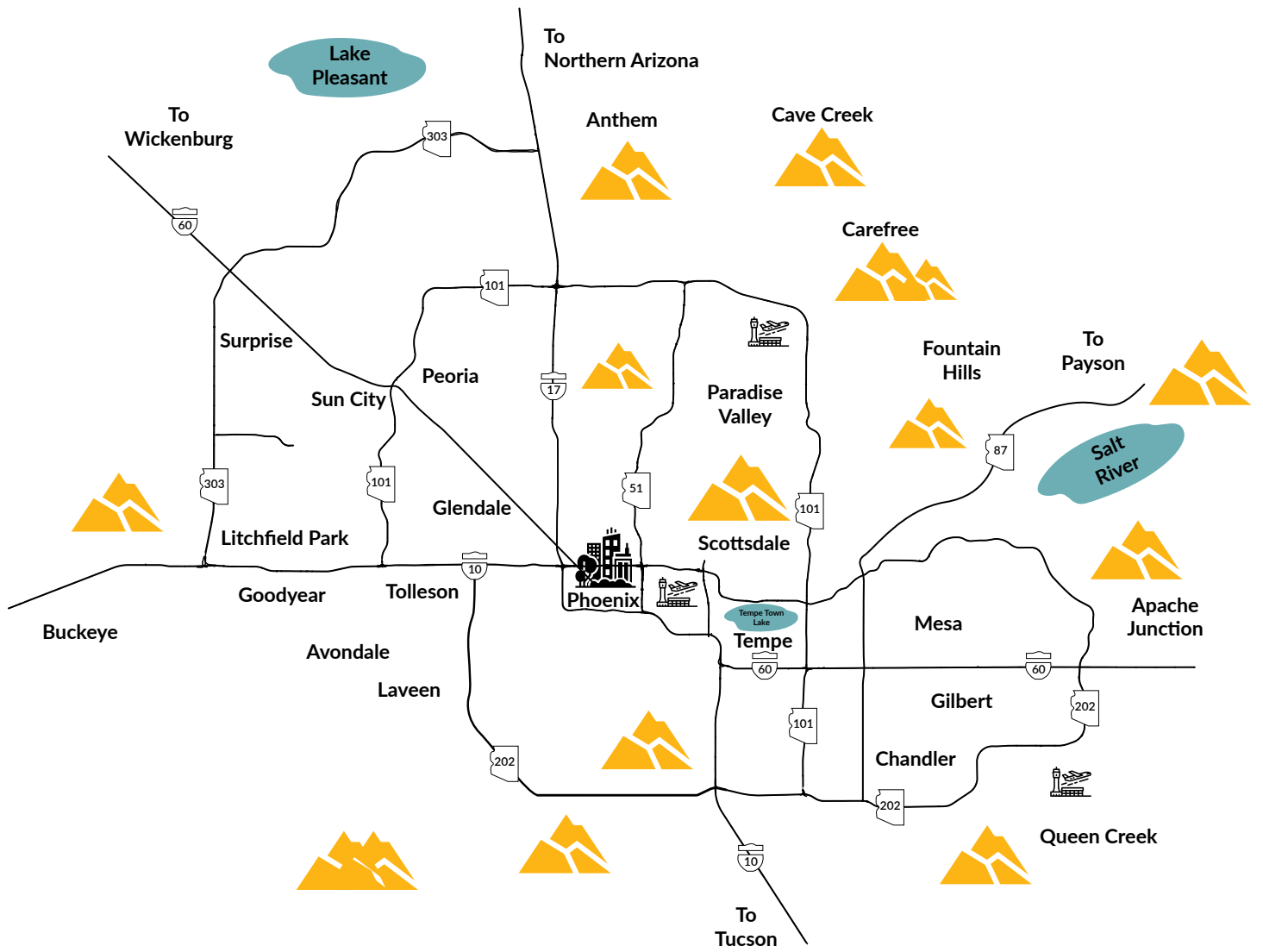
Scottsdale Trolley System

(602) 253-5000 | www.scottsdaleaz.gov/trolley

Metro Light Rail

(602) 253-5000 | www.valleymetro.org





ARIZONA'S TOP EMPLOYERS

BANNER HEALTH

Industry: Health Care
Arizona Employees: 45,837

WALMART

Industry: Retail Store
Arizona Employees: 36,995

AMAZON.COM INC.

Industry: Online Retailer
Arizona Employees: 32,000

KROGER

Industry: Grocery Stores (Fry's)
Arizona Employees: 20,323

WELLS FARGO

Industry: Financial Services
Arizona Employees: 16,302

RAYTHEON CO.

Industry: Aerospace and Defense
Arizona Employees: 14,700

ALBERTSONS

Industry: Grocery Stores
Arizona Employees: 14,500

DIGNITY HEALTH

Industry: Health Care
Arizona Employees: 14,400

HONORHEALTH

Industry: Health Care
Arizona Employees: 13,004

THE HOME DEPOT

Industry: Home-Improvement Center
Arizona Employees: 13,000

CVS HEALTH

Industry: Retail Pharmacies
Arizona Employees: 12,800

INTEL

Industry: Microprocessors and Tech Services
Arizona Employees: 12,000

MCDONALD'S

Industry: Fast-Food Restaurants
Arizona Employees: 11,500

TARGET CORP.

Industry: Retail Stores
Arizona Employees: 9,700

JP MORGAN CHASE & CO.

Industry: Banking and Financial Services
Arizona Employees: 9,100



SCHOOLS

AGUA FRIA UNION HIGH SCHOOL – DISTRICT #216

1481 N. Eliseo Felix Jr. Way, Avondale, 85323

(623) 932-7000 | www.aguafria.org

6 high schools

Established in 1955, the Agua Fria school district serves 6,649 students in grades 9-12 in the communities of Litchfield, Goodyear, Avondale, Buckeye and part of Glendale. A fifth high school is scheduled pending final decision of the Arizona School Facilities Board.

AGUILA ELEMENTARY – DISTRICT #63

50023 N. 514th Avenue, Phoenix, 85019

(928) 685-2222 | www.aguilaschool.org

1 K-8 elementary school

The Aguila Elementary District serves 226 students in grades K-8.

ALHAMBRA ELEMENTARY – DISTRICT #68

4510 N. 37th Avenue, Phoenix, 85019

(602) 336-2920 | www.alhambraesd.org

5 primary schools (K-3), 4 elementary / middle schools (K-8); 6 middle schools (4-8)

Founded in 1888, the Alhambra Elementary District serves more than 14,000 students in 15 schools from grades K-8.

ARLINGTON ELEMENTARY – DISTRICT #47

9410 S. 355th Avenue, Arlington, 85322

(623) 386-2031 | www.arlingtonelem.org

1 elementary/middle school (K-8); 1 high school

The Arlington Elementary District in Maricopa County serves some 275 students in grades K-12

AVONDALE ELEMENTARY – DISTRICT #44

295 W. Western Avenue, Avondale, 85323

(623) 772-5000 | www.chooseaesd.org

8 K-8 schools; 1 alternative school

The Avondale Elementary District in Maricopa County serves 6,227 students in grades K-8.

BALSZ ELEMENTARY – DISTRICT #31

4825 E. Roosevelt Street, Phoenix, 85008

(602) 629-6400 | www.balsz.org

2 elementary schools; 2 K-6 schools;

1 junior high prep academy

Founded in 1890, the Balsz Elementary District in Maricopa County covers six square miles east of downtown Phoenix and serves 2,825 students in grades K-8.

BUCKEYE ELEMENTARY – DISTRICT #33

25555 W. Durango Street, Buckeye, 85326

(623) 925-3400 | www.besd33.org

6 elementary schools

The Buckeye Elementary District in Maricopa County serves 4,600 students in grades K-8.

BUCKEYE UNION HIGH SCHOOL – DISTRICT #201

1000 E. Narramore Avenue, Buckeye, 85326

(623) 386-4423 | www.buhsd.org

3 high schools; 1 academy/alternative school

The Buckeye Union High School District in Maricopa County serves 3,710 students in grades 9-12.

CARTWRIGHT ELEMENTARY – DISTRICT #83

5220 W. Indian School Road, Phoenix, 85031

(623) 691-4000 | www.csd83.org

16 elementary schools; 4 middle schools;

2 alternative schools

Founded in 1921, the Cartwright Elementary District in Maricopa County serves 24,875 students in grades K-8.

CAVE CREEK UNIFIED – DISTRICT #93

33606 N. 60th Street, Cave Creek, 85327

(480) 575-2000 | www.ccsd93.org

5 elementary schools; 1 middle schools;

1 high school

The Cave Creek Unified District, which includes the communities of Cave Creek, Carefree, Maricopa County, North Phoenix and Scottsdale, serves 7,007 students in grades K-12.

CHANDLER UNIFIED – DISTRICT #80

1525 W. Frye Road, Chandler, 85224

(480) 812-7000 | www.cusd80.com

29 elementary schools; 5 junior high schools; 4 high schools; 2 alternative schools

The Chandler Unified District, located in the southeastern part of the Phoenix metropolitan area, serves 40,865 students in grades K-12.

CREIGHTON ELEMENTARY – DISTRICT #14

2702 E. Flower Street, Phoenix, 85016

(602) 381-6000 | www.creightonschools.org

9 Pre-K-8 elementary and middle schools

Founded in 1884, the Creighton Unified District, located in Maricopa County, serves 10,353 students in grades Pre-K-8.

SCHOOLS

DEER VALLEY UNIFIED SCHOOL – DISTRICT #97

20402 N. 15th Avenue, Phoenix, 85027

(623) 445-5000 | www.dvusd.org

16 K-6 elementary schools; 12 K-8 elementary/ middle schools; three 7-8 middle schools; five 9-12 high schools; 1 alternative school; 1 virtual high school; 1 international honors program

One of the largest school districts in Arizona, the Deer Valley Unified District covers 367 square miles and serves 43,788 students in grades K-12 in Phoenix, Glendale | Peoria, Anthem, New River, Cave Creek and unincorporated areas of Maricopa County.

DYSART UNIFIED – DISTRICT #89

15802 N. Parkview Place, Surprise, 85374

(623) 876-7000 | www.dysart.org

20 elementary schools; 1 alternative program campus; 3 high schools

The Dysart Unified District covers 140 square miles and serves 22,067 students in grades K-12 in part of El Mirage, Glendale, Surprise, Youngtown and Maricopa County in the Northwest Valley.

EAST VALLEY INSTITUTE OF TECHNOLOGY – DISTRICT #401

1601 W. Main Street, Mesa, 85201

(480) 461-4000 | www.evit.com

1 high school (10-12); 12 buildings, plus evening adult education

EVIT is a public school district that serves students from 10 East Valley school districts, including Apache Junction, Chandler, Fountain Hills | Gilbert | Mesa, Queen Creek | Scottsdale | Tempe, Higley and J.O. Combs. Students spend half their day at EVIT and the other half at their regular high school, earning elective credit in 35 occupation-specific programs.

FOUNTAIN HILLS UNIFIED – DISTRICT #98

16000 E. Palisades Boulevard, Fountain Hills, 85268

(480) 664-5000 | www.fhusd.org

1 Pre-K-2 elementary school; one elementary school (3-5); 1 middle school (6-8); 1 high school (9-12)

The Fountain Hills Unified District, located just east of Scottsdale and west of the McDowell Mountains, covers 19 square miles and serves about 3,376 students in grades K-12 from the Fort McDowell Yavapai Nation and surrounding communities.

FOWLER ELEMENTARY – DISTRICT #45

1617 S. 67th Avenue, Phoenix, 85043

(623) 707-4500 | www.fesd.org

5 elementary schools (including 1 Pre-K/ childcare center); 2 middle schools

The Fowler Elementary District, located in Maricopa County, serves 5,152 students in grades K-8.

GILA BEND UNIFIED – DISTRICT #24

308 N. Martin Avenue, Gila Bend, 85337

(928) 683-2225 | www.gbUSD.org

1 elementary school (K-8); 1 high school (9-12)

Founded in 1887, the Gila Bend Unified District, located in Maricopa County, serves 486 students in grades K-12.

GILBERT UNIFIED – DISTRICT #41

140 S. Gilbert Road, Gilbert, 85296

(480) 497-3300 | www.gilbertschools.net

1 preschool; 26 elementary schools; 6 junior high schools; 4 high schools; 3 academies; 1 alternative education campus

The Gilbert Unified District had 27 "Excelling"-ranked schools in 2008 and serves more than 45,000 students in grades K-12.

GLENDALE ELEMENTARY – DISTRICT #40

7301 N. 58th Avenue, Glendale, 85301

(623) 237-7100 | www.gesd40.org

1 preschool; 26 elementary schools; 6 junior high schools; 4 high schools; 3 academies; 1 alternative education campus

The Gilbert Unified District had 27 "Excelling"-ranked schools in 2008 and serves 16,779 students in grades K-8.

GLENDALE UNION HIGH SCHOOL – DISTRICT #205

7650 N. 43rd Avenue, Glendale, 85301

(623) 435-6000 | www.guhsdaz.org

9 high schools (9-12)

Founded in 1911, the Glendale Union High School District encompasses 60 square miles and serves 20,231 students from Phoenix and Glendale.

HIGLEY UNIFIED – DISTRICT #60

2935 S. Recker Road, Gilbert, 85297

(480) 279-7000 | www.husd.org

7 elementary schools; 1 elementary/ middle school; 2 high schools

The Higley Unified District, located in Maricopa County, serves some 9,500 students in grades K-12.

ISAAC ELEMENTARY – DISTRICT #5

3348 W. McDowell Road, Phoenix, 85009

(602) 455-6700 | www.isaacschools.org

7 elementary schools (one K-3, one K-4, five K-5); 2 elementary/middle schools (K-8); 3 middle schools (one 5-8, two 6-8)

The Isaac Elementary District, which covers 6.8 square miles in Maricopa County, serves about 8,520 students in grades K-8.

KYRENE ELEMENTARY – DISTRICT #28

8700 S. Kyrene Road, Tempe, 85284

(480) 541-1000 | www.kyrene.org

19 elementary schools; 6 middle schools

Founded in 1888, the Kyrene Elementary District serves 21,838 students in grades K-8 from the cities of Tempe, Guadalupe | Phoenix and Chandler, as well as students from the Gila River Indian Reservation.

LAVEEN ELEMENTARY – DISTRICT #59

5001 W. Dobbins Road, Laveen, 85339

(602) 237-9100 | www.laveeneld.org

five K-8 elementary/middle schools;
1 traditional school

The Laveen Elementary District, located in the southwest portion of Phoenix between the South Mountain Range and the Estrella Mountains in Maricopa County, serves some 5,019 students in grades K-8.

LIBERTY ELEMENTARY – DISTRICT #25

19871 W. Fremont Road, Buckeye, 85326

(623) 474-6600 | www.liberty25.org

5 elementary schools

The Liberty Elementary District, located in Maricopa County, serves 3,144 students in grades K-8.

LITCHFIELD ELEMENTARY – DISTRICT #79

272 E. Sagebrush Street, Litchfield Park, 85340

(623) 535-6000 | www.lesd79.org

8 elementary schools; 3 middle schools;
1 learning center

The Litchfield Elementary District, located in Maricopa County, serves 9,156 students in grades K-8.

LITTLETON ELEMENTARY – DISTRICT #65

1600 S. 107th Avenue, Avondale, 85323

(623) 478-5720 | www.littletonaz.org

Six K-8 elementary schools

Founded more than 100 years ago, the Littleton Elementary District, located in Maricopa County, serves over 6,000 students in grades K-8.

MADISON ELEMENTARY – DISTRICT #38

5601 N. 16th Street, Phoenix, 85016

(602) 664-7900 | www.madisonaz.org

5 elementary schools (including 1 Pre-K/ childcare center); 2 middle schools

The Madison Elementary District, located in Maricopa County, serves 5,325 students in grades K-8.

MARICOPA COUNTY REGIONAL SCHOOL – DISTRICT #509

4041 N. Central Avenue, Suite 1200, Phoenix, 85012

(602) 452-4700 | www.mcrsd.org

1 middle/high school (6-12); 1 regional learning center (9-12); 2 alternative schools (3-12)

The Maricopa County Regional School District serves nearly 1,000 students.

MESA UNIFIED – DISTRICT #4

63 E. Main Street, Suite 101, Mesa, 85201

(480) 472-0000 | www.mpsaz.org

58 elementary schools; 13 junior high schools; 7 senior high schools; 9 focus schools; and 13 “choice” programs/schools (including early learning and Head Start programs)

The Mesa Unified District, one of the state’s largest, serves some 81,361 students in grades Pre-K-12.

MOBILE ELEMENTARY – DISTRICT #86

42798 S. 99th Avenue, Maricopa, 85239

(520) 568-2280 | www.mobileesd.org

1 elementary/middle school

The Mobile Elementary District is a rural school district that serves 24 students in grades K-8.

MORRISTOWN ELEMENTARY – DISTRICT #75

25950 W. Rockaway Hills Road, Morristown, 85342

(623) 546-5100 | www.morristowneld75.org

1 elementary/middle school

The Morristown Elementary District serves 112 students in grades K-8.

MURPHY ELEMENTARY – DISTRICT #21

2615 W. Buckeye Road, Phoenix, 85009

(602) 353-5004 | www.msdaaz.org

4 elementary/middle schools

Founded in 1886, the Murphy Elementary District, located in Maricopa County, serves 2,247 students in grades K-8.

NADABURG UNIFIED SCHOOL – DISTRICT #81

32919 N. Center Street, Wittman, 85361

(623) 388-2100 | www.nadaburgsd.org

4 elementary/middle schools

Located about 35 miles from downtown Phoenix, the Nadaburg Unified District serves 986 students in grades K-12 from the rural community of Wittman and parts of northwest Surprise and Peoria.

SCHOOLS

OSBORN ELEMENTARY – DISTRICT #8

1226 W. Osborn Road, Phoenix, 85013
(602) 707-2000 | www.osbornnet.org
1 K-3 elementary school; three K-6 elementary schools;
one 4-6 elementary school; one 7-8 middle school
Originally founded in 1879 to serve students from Tonto Basin,
the Osborn Elementary District serves 3,649 students in grades K-8.

PALO VERDE ELEMENTARY – DISTRICT #49

10700 S. Palo Verde Road, Palo Verde, 85343
(623) 327-3690 | www.pvesd.org
1 K-8 elementary/middle school
The Palo Verde Elementary District, located about 50 miles west of Phoenix,
serves 248 students in grades K-8.

PALOMA ELEMENTARY – DISTRICT #94

38739 W. I-8, Gila Bend, 85337
(928) 683-2588 | www.palomaesd.org
1 K-8 elementary/middle school
The Paloma Elementary District, a rural district in Maricopa County,
serves 82 students in grades K-8.

PARADISE VALLEY UNIFIED – DISTRICT #69

15002 N. 32nd Street, Phoenix, 85032
(602) 449-2000 | www.pvschools.net
31 elementary schools; 8 middle schools; 5 high schools;
several alternative/choice programs
The fourth-largest public school district in Arizona, the Paradise Valley Unified
District, located across 98 square miles of northeast metropolitan Phoenix,
serves some 42,238 students in grades K-12.

PENDERGAST ELEMENTARY – DISTRICT #92

3802 N. 91st Avenue, Phoenix, 85037
(623) 772-2200 | www.pesd92.org
1 primary school; 12 elementary schools;
1 intermediate school
The Pendergast Elementary District, is located in Maricopa County,
serves 13,786 students in grades K-8.

PEORIA UNIFIED – DISTRICT #11

6330 W. Thunderbird Road, Glendale, 85306
(623) 486-6000 | www.peoriaunified.org
30 elementary schools; 8 high schools
The Peoria Unified District, located in the Phoenix suburb of Glendale,
serves 38,611 students in grades K-12.

PHOENIX ELEMENTARY – DISTRICT #1

1817 N. 7th Street, Phoenix, 85006
(602) 257-3755 | www.phxschools.org
16 elementary/middle schools
The Phoenix Elementary District in Maricopa County serves serves
8,134 students in grades K-8.

PHOENIX UNION HIGH SCHOOL – DISTRICT #210

4502 N. Central Avenue, Phoenix, 85012
(602) 764-1100 | www.pxu.org
11 comprehensive high schools; 3 alternative schools;
3 small schools.
The Phoenix Union High School District serves 46,055 students in grades K-12.

QUEEN CREEK UNIFIED – DISTRICT #95

20217 E. Chandler Height Road, Queen Creek, 85242
(480) 987-5935 | www.qcusd.org
4 elementary schools; 2 middle schools;
1 high school
The Queen Creek Unified District, located in Maricopa County,
serves 5,113 students in grades K-12.

RIVERSIDE ELEMENTARY – DISTRICT #2

1414 S. 51st Avenue, Phoenix, 85043
(602) 477-8900 | www.resdonline.org
2 elementary schools
The Riverside Elementary District, located west of the Phoenix metro area,
serves 1209 students in grades K-8.

ROOSEVELT ELEMENTARY – DISTRICT #66

6000 S. 7th Street, Phoenix, 85042
(602) 243-4800 | www.rsd66.com
21 elementary, middle and alternative schools
Founded in 1912 and located in South Mountain Village near downtown
Phoenix, the Roosevelt Elementary District serves 15,304 students
in grades K-8.

SADDLE MOUNTAIN UNIFIED – DISTRICT #90

38201 W. Indian School Road, Tonopah, 85354
(623) 474-5115 | www.smusd90.org
3 elementary schools; 1 high school
The Saddle Mountain Unified District serves 1,067
students in grades K-12.

SCOTTSDALE UNIFIED SCHOOL – DISTRICT #48

8500 E. Jackrabbit Road, Scottsdale, 85250

(480) 484-6100 | www.susd.org

20 elementary schools; 7 middle schools; 5 high schools;
1 alternative school

Founded in 1886, the Scottsdale Unified School District serves 33,470 students in grades K-12 in most of Scottsdale and Paradise Valley, as well as parts of Phoenix and Tempe.

SENTINEL ELEMENTARY – DISTRICT #71

53802 Old US Highway, Sentinel, 85333

(928) 454-2474 | www.sentinelesd.org

1 elementary/middle school

The rural Sentinel Elementary District serves 39 students in grades K-8.

TEMPE ELEMENTARY – DISTRICT #3

3205 S. Rural Road, Tempe, 85282

(480) 730-7100 | www.tempeschools.org

18 elementary schools (K-5); 4 middle schools (6-8);
Intervention Program middle schools (6-8); and a K-8
traditional school

The Tempe Elementary School District covers 36 square miles – including Tempe, parts of Phoenix and the town of Guadalupe – and serves 14,026 students in grades K-8.

TEMPE UNION HIGH SCHOOL – DISTRICT #213

500 W. Guadalupe Road, Tempe, 85283

(480) 839-0292 | www.tempeunion.org

6 comprehensive high schools; 1 alternative high school;
1 academy for gifted students

The Tempe Union High School District covers 162 square miles – including the cities of Tempe, Guadalupe, the Gila River Indian community, the Ahwatukee Foothills area of Phoenix and parts of Chandler – and serves 32,340 students in grades K-8.

TOLLESON ELEMENTARY – DISTRICT #17

9261 W. Van Buren, Tolleson, 85353

(623) 533-3900 | www.tollesonschools.org

4 elementary/middle schools

Organized in 1923, the Tolleson Elementary District is located about 10 miles west of downtown Phoenix, and serves 2,859 students in grades K-8 from Tolleson, parts of southwest Phoenix and the northeast section of the city of Avondale.

TOLLESON UNION HIGH SCHOOL – DISTRICT #214

9801 W. Van Buren Street, Tolleson, 85353

(623) 478-4000 | www.tuhsd.org

6 high schools

The Tolleson Union High School District, founded in 1914, covers just over 10 square miles and serves some 11,566 students in grades 9-12.

UNION ELEMENTARY – DISTRICT #62

3834 S. 91st Avenue, Tolleson, 85353

(623) 478-5005 | www.unionesd.org

1 elementary school (K-5); 1 middle school (6-8);
1 K-7 school

The Union Elementary District, also in Tolleson and located about 25 miles west of downtown Phoenix, serves 2,761 students in grades K-8.

WASHINGTON ELEMENTARY – DISTRICT #6

4650 W. Sweetwater Avenue, Glendale, 85304

(602) 347-2600 | www.wesdschools.org

19 K-6 elementary schools; two K-5 elementary schools;
six K-8 elementary/ middle schools; one 6-8 middle
school; 4 middle/junior high schools

The Washington Elementary School District, the largest elementary district in Arizona, serves more than 29,000 students in grades K-8.

WEST MEC - DISTRICT #402

5487 N. 99th Avenue, Glendale, 85305

(623) 738-0022 | www.west-mec.edu

Formed in 2003 to enhance career and technical education (CTE) opportunities for high school students, the West-MEC (Maricopa Education Center) is a public school district that has partnerships with 12 school districts in Maricopa County. The district has serves more than 21,000 students in 39 high schools that enroll in CTE courses at West-MEC.

WICKENBURG UNIFIED – DISTRICT #9

101 E. Coconino Street, Wickenburg, 85390

(928) 668-5350 | www.wickenburgschools.org

2 elementary schools (K-5); 1 middle school (6-8); 1 high
school (9-12); 1 alternative high school (9-12)

The Wickenburg Unified District, located in northwest Maricopa County about 50 miles west of Phoenix in the Hassayampa River Valley, serves 665 students in grades K-8.

WILSON ELEMENTARY – DISTRICT #7

3025 E. Fillmore Street, Phoenix, 85008

(602) 681-2200 | www.wsd.k12.az.us

1 Head Start school; 1 primary school (K-3); 1
elementary/middle school (4-8)

The Wilson Elementary District serves 683 students in grades K-8.

RESTAURANTS

MEXICAN

RANCHO DE TIA ROSA

Gilbert

891 N. Higley Road, Gilbert

(480) 396-8787 | www.ranchodetiarosa.com

FRANK & LUPE'S

Old Town Scottsdale

4121 N. Marshall Way, Scottsdale

(480) 990-9844 | www.frankandlupes.com

BLANCO TACOS + TEQUILA

Various Locations

2502 E. Camelback Road, Phoenix

(602) 429-8000 | www.blancococinacantina.com

JOYRIDE TACO HOUSE EASTSIDE

Various Locations

302 N. Gilbert Road, Gilbert

(480) 632-8226 | www.joyridetacohouse.com

GALLO BLANCO CAFE Y BAR

Downtown Phoenix

928 E. Pierce Street, Phoenix

(602) 327-0880 | www.galloblancocafe.com

BARRIO QUEEN

Various Locations

3400 E. Sky Harbor Boulevard, Phoenix

(602) 636-0240 | www.barriocafe.com

TEE PEE MEXICAN FOOD

Arcadia-Phoenix

4144 E. Indian School Road, Phoenix

(602) 956-0178 | www.teepeemexicanfood.com

CRUJIENTE TACOS

Arcadia-Phoenix

3961 E. Camelback Road, Phoenix

(602) 687-7777 | www.crutacos.com

LADERA TAVERNA Y COCINA

Phoenix

8729 N. Central Avenue, Phoenix

(602) 606-2258 | www.laderaphx.com

TACO GUILD GASTROPUB

Phoenix

546 E. Osborn Road, Phoenix

(602) 264-4143 | www.tacoguild.com

PHOENIX BURRITO HOUSE

Central Phoenix

4140 N. 7th Avenue, Phoenix

(602) 265-1274

TACOS CHIWAS

Various Locations

1923 E. McDowell Road, Phoenix

(602) 358-8830 | www.tacoschiwas.com

CAROLINA'S MEXICAN FOOD

Various Locations

1202 E. Mohave Street, Phoenix

(602) 252-1503 | www.carolinasmexicanfood.com

CASA CORAZON RESTAURANT

Uptown Phoenix

2637 N. 16th Street, Phoenix

(602) 334-1917 | www.casacorazonrestaurant.com

LA BAMBA MEXICAN GRILL RESTAURANT

El Mirage

12102 W. Thunderbird Road, El Mirage

(623) 213-7860



RESTAURANTS

AMERICAN

JOJO COFFEEHOUSE

Scottsdale

3712 N. Scottsdale Road, #110, Scottsdale
(480) 907-6100 | www.jojocoffeehouse.com

TAPHOUSE KITCHEN

Various Locations

3131 E. Shea Boulevard, Phoenix
(602) 482-2800 | www.taphousekitchen.com

ST. FRANCIS

Phoenix

111 E. Camelback Road, Phoenix
(602) 200-8111 | www.stfrancisaz.com

THE HIDDEN HOUSE

Chandler

159 W. Commonwealth Avenue, Chandler
(480) 275-5525 | www.hiddenhouseaz.com

SOCIAL HALL

Tempe

715 S. McClintock Drive, Tempe
(480) 747-3851 | www.azsocialhall.com

THE ARROGANT BUTCHER

Phoenix

2 E. Jefferson Street, #150, Phoenix
(602) 324-8502 | www.thearrogantbutcher.com

OCOTILLO

Phoenix

3243 N. 3rd Street, Phoenix
(602) 687-9080 | www.ocotillophx.com

LITTLE RITUALS

Phoenix

132 S. Central Avenue, Floor 4, Phoenix
(602) 704-0632 | www.littleritualsbar.com

THE MACINTOSH

Phoenix

2119 E. Camelback Road, #A21, Phoenix
(602) 368-8766 | www.themacintoshaz.com

RESTAURANT PROGRESS

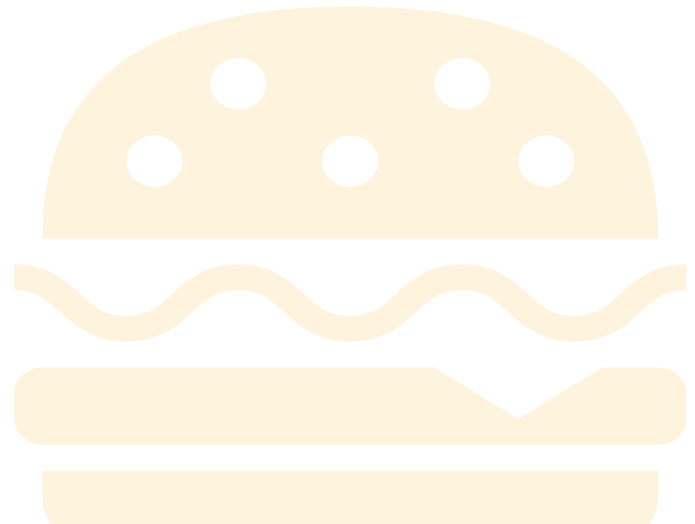
Phoenix

702 W. Montecito Avenue, Phoenix
(602) 441-0553 | www.restaurantprogress.com

OVEN + VINE

Phoenix

14 W. Vernon Avenue, Phoenix
(602) 687-7632 | www.ovenandvine.com



RESTAURANTS



ASIAN

THE CLEVER KOI

Various Locations

4236 N. Central Avenue, Phoenix
(602) 222-3474 | www.thecleverkoi.com

CASA FILIPINA

Phoenix

3531 W. Thunderbird Road, Phoenix
(602) 942-1258 | www.casafilipina.com

WONG'S CHINESE FOOD

Phoenix

10540 W. Indian School Road, #4, Phoenix
(623) 877-4123 | www.wongsphoenix.com

CHINO BANDIDO

Phoenix

310 W. Bell Road, Phoenix
(602) 375-3639 | www.chinobandido.com

SUN ASIAN KITCHEN

Phoenix

2070 E. Baseline Road, #TE112, Phoenix
(602) 268-7708 | www.sunasiankitchen.com

GEORGE & SON'S ASIAN CUISINE

Various Locations

3049 W. Agua Fria Freeway, Phoenix
(623) 434-1888 | www.georgeandsonsasiancuisine.com

HALO-HALO KITCHEN

Phoenix

3553 W. Dunlap Avenue, Phoenix
(602) 324-9670 | www.gothalohalo.com

CHOU'S KITCHEN

Various Locations

1250 E. Apache Boulevard, #101, Tempe
(480) 557-8888 | www.chouskitchen.com

BAMBOO CAFE

Deer Valley

6525 W. Happy Valley Road, Deer Valley
(623) 376-8803 | www.bamboocafeaztogo.com

ICHI BOWL

Phoenix

5124 N. 19th Avenue, Phoenix
(602) 841-2202 | www.ichibowlaz.com

HIBACHI GRILL & SUPREME BUFFET

Phoenix

10030 N. Metro Parkway E, Phoenix
(615) 678-8183 | www.hibachibuffetus.com

PASSAGE TO INDIA

Tempe

909 E. Elliot Road, Tempe
(480) 275-2008 | www.passagetoindiaaz.com

INDIA'S FLAME

Tempe

4427 S. Rural Road, Tempe
(480) 456-0155 | www.indiasflame.com



SUSHI

HIRO SUSHI

Scottsdale

9393 N. 90th Street, Scottsdale

(480) 314-4215 | www.hirosushiphx.com

ROKA AKOR

Scottsdale

7299 N. Scottsdale Road, Scottsdale

(480) 306-8800 | www.rokaakor.com

HANA JAPANESE EATERY

Phoenix

5524 N. 7th Avenue, Phoenix

(602) 973-1238 | www.hanajapaneseeatery.com

SUSHI SONORA

Various Locations

3555 W. McDowell Road, Phoenix

(602) 278-9355 | www.sushisonoraaz.com

HARUMI SUSHI & SAKE

Phoenix

114 W. Adams Street, c101, Phoenix

(602) 258-0131 | www.harumisushiaz.com

KAIZEN PHX

Phoenix

515 E. Grant Street, #100, Phoenix

(602) 432-0752 | www.kaizenphx.com

SUSHI NAKANO

Phoenix

4025 E. Chandler Boulevard, Phoenix

(602) 603-2129 | www.sushinakano.com

RA SUSHI AND BAR

Various Locations

4921 E. Ray Road, #B1, Phoenix

(480) 940-1111 | www.rasushi.com

MR. SUSHI

Phoenix

8041 N. Black Canyon Highway, #112, Phoenix

(602) 864-9202 | www.sushiakaihana.com



RESTAURANTS



PIZZA

LA PIAZZA AL FORNO

Glendale

5803 W. Glendale Avenue, Glendale
(623) 847-3301 | www.slicelife.com

FABIO ON FIRE

Peoria

8275 W. Lake Pleasant Parkway, #101, Peoria
(623) 680-5385 | www.fabioonfire.com

MIMI FORNO ITALIANO

Laveen Village

3624 W. Baseline Road, #174, Laveen Village
(602) 368-4612 | www.mimifornoitaliano.com

GRAND AVENUE PIZZA COMPANY

Phoenix

1031 Grand Avenue, Phoenix
(602) 253-6107 | www.grandavenuepizzacompany.com

CIBO URBAN PIZZERIA

Phoenix

603 N. 5th Avenue, Phoenix
(602) 441-2697 | www.cibophoenix.com

PIZZERIA BIANCO

Various Locations

623 E. Adams Street, Phoenix
(602) 234-2100 | www.pizzeriabianco.com

FORNO 301

Phoenix

1616 N. Central Avenue, #104, Phoenix
(480) 787-5654 | www.forno301.com

THE PARLOR PIZZERIA

Phoenix

1916 E. Camelback Road, Phoenix
(602) 248-2480 | www.theparlor.us

PIZZERÍA VIRTÙ

Scottsdale

6952 E. Main Street, Scottsdale
(480) 663-9797 | www.pizzeriavirtu.com

CRISP PREMIUM PIZZA

Scottsdale

7111 E. 5th Avenue, #F, Scottsdale
(480) 874-2747 | www.crisp-pizza.com

POMO PIZZERIA NAPOLETANA

Various Locations

8977 N. Scottsdale Road, Scottsdale
(480) 998-1366 | www.pomopizzeria.com

LAMP PIZZERIA

Scottsdale

8900 E. Pinnacle Peak Road, Scottsdale
(480) 292-8773 | www.lamppizza.com

CRAFT 64

Various Locations

68 W. Buffalo Street, Chandler
(480) 247-3002 | www.craft64.com

MYKE'S PIZZA

Mesa

31 S. Robson, #103, Mesa
(480) 687-8526 | www.mykespizza.com



RESTAURANTS



ITALIAN

TRATTO

Phoenix

1505 E. Van Buren Street, Phoenix
(602) 296-7761 | www.trattophx.com

VIRTÚ HONEST CRAFT

Scottsdale

3701 N. Marshall Way, Scottsdale
(480) 946-3477 | www.virtuhonestcraft.com

TOMASO'S

Phoenix

3225 E. Camelback Road, Phoenix
(602) 956-0836 | www.tomasos.com

FELLOW OSTERIA

Scottsdale

1455 N. Scottsdale Road, #100, Scottsdale
(480) 207-1864 | www.fellowosteria.com

AVANTI RESTAURANT OF DISTINCTION

Phoenix

2728 E. Thomas Road, Phoenix
(602) 956-0900 | www.avanti-az.com

POMODORO ITALIAN GRILL & SEAFOOD

Cave Creek

6710 E. Cave Creek Road, Cave Creek
(480) 524-0989 | www.pomodorousa.com

ANDREOLI ITALIAN GROCER

Scottsdale

8880 E. Vía Linda Road, Scottsdale
(480) 614-1980 | www.andreoli-grocer.com

MARCELLINO RISTORANTE

Scottsdale

7114 E. Stetson Drive, Scottsdale
(480) 990-9500 | www.marcellinoristorante.com

DEFALCO'S ITALIAN DELI & GROCERY

Scottsdale

2334 N. Scottsdale Road, #A133, Scottsdale
(480) 990-8660 | www.defalcosdeli.com

PARMA ITALIAN ROOTS

Scottsdale

20831 N. Scottsdale Road, #117, Scottsdale
(480) 292-9900 | www.parmaitalianaz.com

MORA ITALIAN

Phoenix

5651 N. 7th Street, Phoenix
(602) 795-9943 | www.moraitalian.com



RESTAURANTS

BBQ

TEXAS BBQ HOUSE

Phoenix
5037 S. 24th Street, #3, Phoenix
(602) 343-6447 | www.texasbbqhouseaz.com

ARIZONA BBQ SHACK

Scottsdale
8471 E. McDonald Drive, Scottsdale
(480) 948-4227 | www.arizonabbqshack.com

BOBBY-Q

Various Locations
8501 N. 27th Avenue, Phoenix
(602) 995-5982 | www.bobbyqbbq.com

JOE'S REAL BBQ

Gilbert
301 N. Gilbert Road, Gilbert
(480) 503-3805 | www.joesrealbbq.com

PORK ON A FORK

Phoenix
1515 W. Deer Valley Road, Phoenix
(877) 224-2271 | www.porkonafork.com

LITTLE MISS BBQ

Various Locations
4301 E. University Drive, Phoenix
(602) 437-1177 | www.littlemissbbq.com

CAN'T STOP SMOKIN' BBQ

Chandler
7250 W. Chandler Boulevard, Chandler
(480) 398-4827 | www.cantstopmokinaz.com

HONEY BEAR'S BBQ

Phoenix
5012 E. Van Buren Street, Phoenix
(602) 702-3060 | www.honeybearsbbq.com

FRASHER'S SMOKEHOUSE

Arcadia - Phoenix
3222 E. Indian School Road, Phoenix
(602) 314-5599 | www.frasherssmokehouse.com

BRYAN'S BBQ

Cave Creek
6130 E. Cave Creek Road, Cave Creek
(480) 575-7155 | www.bryansbarbecue.com

NAKED Q

Phoenix
2340 W. Bell Road, Phoenix
(602) 439-4227 | www.nakedq.com

DANKY'S BAR-B-Q

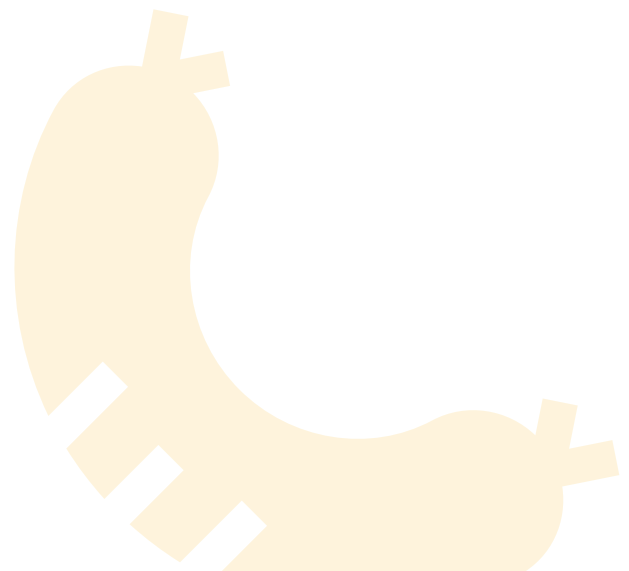
Phoenix
4727 E. Bell Road, Phoenix
(602) 996-2016 | www.dankysbbq.com

TRAPP HAUS BBQ

Phoenix
511 E. Roosevelt Street, Phoenix
(602) 466-5462 | www.trapphausbbq.com

JL SMOKEHOUSE

Phoenix
1712 E. Broadway Road, Phoenix
(501) 353-6844 | www.jlsmokehouse.com



STEAKHOUSE

ARROWHEAD GRILL

Glendale

8280 W. Union Hills Drive, Glendale
(623) 566-2224 | www.arrowheadgrill.com

BOURBON STEAK

Scottsdale

7575 E. Princess Drive, Fairmont Scottsdale Princess
(480) 585-2694 | www.scottsdaleprincess.com

THE CAPITAL GRILLE

Various Locations

2502 E. Camelback Road, Phoenix
(602) 952-8900 | www.thecapitalgrille.com

DOMINICK'S STEAKHOUSE

Scottsdale

15169 N. Scottsdale Road, Scottsdale
(480) 272-7271 | www.dominickssteakhouse.com

STEAK 44

Phoenix

5101 N. 44th Street, Phoenix
(602) 271-4400 | www.steak44.com

OCEAN 44

Scottsdale

4748 N. Goldwater Boulevard, Scottsdale
(480) 867-0044 | www.ocean44.com

DURANT'S

Phoenix

2611 N. Central Avenue, Phoenix
(602) 264-5967 | www.durantsaz.com

FLEMING'S

Various Locations

6333 N. Scottsdale Road, Scottsdale
(480) 596-8266 | www.flemingssteakhouse.com

J&G STEAKHOUSE

Phoenix

6000 E. Camelback Road, Phoenix
(480) 214-8000 | www.jgsteakhousescottsdale.com

MASTRO'S STEAKHOUSE

Various Locations

8852 E. Pinnacle Peak Road, Scottsdale
(480) 585-9500 | www.mastrosrestaurants.com

KEELER'S NEIGHBORHOOD STEAKHOUSE

Carefree

7212 Ho Hum Drive, Carefree
(602) 374-4784 | www.keelerssteakhouse.com

BOURBON & BONES

Various Locations

2150 E. Williams Field Road, #123, Gilbert
(480) 597-9459 | www.bourbonandbonesaz.com

DC STEAK HOUSE

Chandler

180 S. Arizona Avenue, #106, Chandler
(480) 899-4400 | www.dc-steakhouse.com





CHANDLER

CHANDLER FASHION

3111 W. Chandler Boulevard

PHOENIX PREMIUM OUTLETS

4976 Premium Outlets Way

GLENDALE

TANGER OUTLETS

6800 N. 95th Avenue

ARROWHEAD TOWNE CENTER

7700 W. Arrowhead Towne Center

GILBERT

SAN TAN VILLAGE

2218 E. Williams Field Road

TEMPE

ARIZONA MILLS

5000 S. Arizona Mills Circle

TEMPE MARKETPLACE

2000 E. Rio Salado Parkway

PHOENIX

UPTOWN PLAZA

14 E. Camelback Road

OUTLETS AT ANTHEM

4250 W. Anthem Way

BILTMORE FASHION PARK

2502 E. Camelback Road

DESERT RIDGE MARKETPLACE

21001 N. Tatum Boulevard

MELROSE DISTRICT

4238 N. 7th Avenue

SHOPS AT NORTERRA

2450 W. Happy Valley Road, #1142

SCOTTSDALE

SCOTTSDALE FASHION SQUARE

7014 E. Camelback Road

SCOTTSDALE QUARTER

15059 N. Scottsdale Road

KIERLAND COMMONS

15205 N. Kierland Boulevard, #150

OLD TOWN SCOTTSDALE

4200 N. Scottsdale Road



GYMS



EÖS FITNESS

Various Locations

LIFETIME FITNESS

Various Locations

LA FITNESS

Various Locations

MOUNTAINSIDE FITNESS

Various Locations

ANYTIME FITNESS

Various Locations

5 STAR FITNESS

2102 N. Scottsdale Road, Scottsdale
1050 N. Fairway Drive, I-109, Avondale

DC RANCH VILLAGE HEALTH CLUB

18501 N. Thompson Peak Parkway, Scottsdale

GAINNEY VILLAGE HEALTH CLUB

7477 E. Doubletree Ranch Road, Scottsdale

INDEPENDENCE GYM

2980 N. Hayden Road, Scottsdale

TRIFIT WELLNESS

505 E. Camelback Road, Phoenix

CAMELBACK VILLAGE RACQUET & HEALTH CLUB

4444 E. Camelback Road, Phoenix

CAMELBACK BOXING GYM

529 E. Camelback Road, Phoenix
7005 N. 15th Street, Phoenix

TITLE BOXING CLUB

5037 E. Ray Road | Phoenix
3031 E. Indian School Road, #19, Phoenix
15367 W. McDowell Road, #C-2, Goodyear



OUTDOOR ACTIVITIES

JAPANESE FRIENDSHIP GARDEN

Phoenix
1125 N. 3rd Avenue, Phoenix
(602) 256-3204 | www.japanesefriendshipgarden.org

CANYON LAKE

Mesa
16802 NE Highway 88, Tortilla Flat
(480) 288-9233 | www.canyonlakemarina.com

MCDOWELL MOUNTAIN REGIONAL PARK

Phoenix
16300 McDowell Mountain Park Drive, Phoenix
(480) 471-0173 | www.maricopacountyparks.net

USERY MOUNTAIN REGIONAL PARK

Mesa
3939 N. Usery Pass Road, Mesa
(480) 984-0032 | www.maricopacountyparks.net

LAKE PLEASANT REGIONAL PARK

Northwest Valley
41835 N. Castle Hot Springs Road, Morristown
(602) 506-2930 | www.maricopacountyparks.net

PAPAGO PARK

Phoenix
625 N. Galvin Parkway, Phoenix
(602) 495-5458 | www.phoenix.gov

DREAMY DRAW RECREATION AREA

Phoenix
2421 E. Northern Avenue, Phoenix
(602) 261-8318 | www.phoenix.gov

SOUTH MOUNTAIN PARK

Phoenix
10919 S. Central Avenue, Phoenix
(602) 495-0222 | www.phoenix.gov

TEMPE BEACH PARK AND TOWN LAKE

Tempe
0 W. Rio Salado Parkway, Tempe
(480) 350-5200 | www.tempe.gov

CAMELBACK MOUNTAIN ECHO CANYON RECREATION AREA

Phoenix
4925 E. McDonald Drive, Phoenix
(602) 261-8318 | www.climbcamelback.com

PHOENIX ZOO

Phoenix
455 N. Galvin Parkway, Phoenix
(602) 286-3800 | www.phoenixzoo.org

DESERT BOTANICAL GARDEN

Phoenix
1201 N. Galvin Parkway, Phoenix
(480) 941-1225 | www.dbg.org

TOPGOLF

Various Locations
1689 S. Santan Village Parkway, Gilbert
(480) 240-1282
6101 N. 99th Avenue, Glendale
(623) 218-2243
9500 E. Talking Stick Way, Scottsdale
(480) 240-2402
www.topgolf.com

BUTTERFLY WONDERLAND

Scottsdale
9500 E. Via de Ventura, F100, Scottsdale
(480) 800-3000 | www.butterflywonderland.com

BARTLETT LAKE

Carefree
20808 E. Bartlett Dam Road, Carefree
(602) 316-3378 | www.bartlettlake.com

WILDLIFE WORLD ZOO

Litchfield Park
16501 W. Northern Avenue, Litchfield Park
(623) 935-9453 | www.wildlifeworld.com



REPTILES

GILA MONSTER

Gila Monsters not only look like a monster, but they happen to be one of the most dangerous reptiles in Arizona. If you ever spot one, just leave it unbothered and go away.



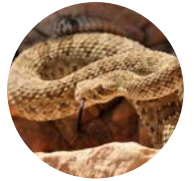
BARK SCORPION

Out of the 30+ species of scorpions found in Arizona, only the Bark Scorpion is poisonous. These little critters are nocturnal and travel in packs of 25-30, so if you see one, there is a good chance there are more. If you are worried there are scorpions in your area, have a black light handy to help spot them out.



RATTLESNAKE

There are 17 species of rattlesnakes found in Arizona, all being venomous. They typically do not strike unless threatened but still just be careful. They are most active from March through October.



BLACK WIDOW AND BROWN RECLUSE

The Black Widow and Brown Recluse are the only spiders in Arizona that are venomous. Female Black Widows are easily distinguishable by the red or orange hourglass on their stomachs and they, like rattlesnakes, bite when they feel attacked. Brown Recluse spiders are not so common in the valley.



SONORAN DESERT TOAD

Also known as the Colorado River Toad, these toads secrete a poisonous slime-like fluid that is very toxic to pets like cats and dogs. The only way these are capable of harming humans is if their fluids come into contact with your skin or if it is accidentally ingested. The toxins produced have been known to have hallucinogenic effects on humans.



PLANTS

JIMSON WEED

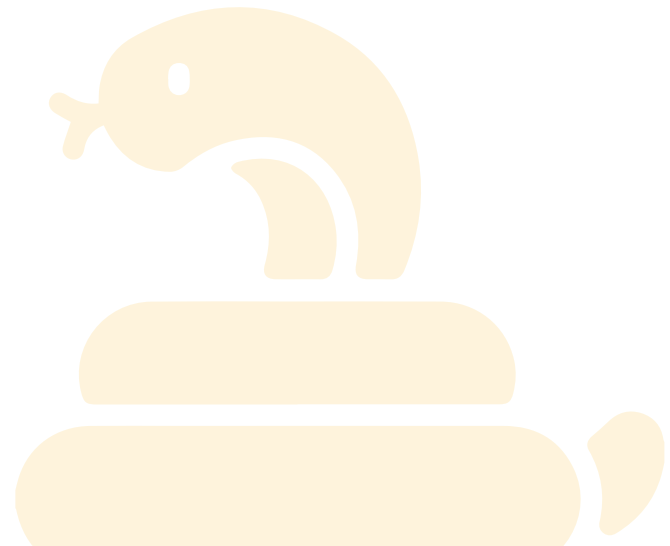
CANDELABRA CACTUS

POISON OAK

ROSARY PEA

CASTOR BEAN

OLEANDER



DOWNTOWN PHOENIX

Includes the Roosevelt Row Art District with spots such as The Churchill, Sazerac, Arizona Wilderness Brewing Co., and Angels Trumpet Ale House. Visit Crescent Ballroom, where local and national music acts take the stage most every night of the year. If you are looking for more fun and excitement, visit Cobra Arcade Bar, Bitter & Twisted Cocktail Parlour, Little Rituals, Dust Cutter or the two-block CityScape complex, which includes Chico Malo and Blue Hound Kitchen & Cocktails.

CENTRAL PHOENIX

Where the locals play after work at neighborhood hangouts such as Culinary Dropout at The Yard, The Vig Uptown, Linger Longer Lounge, The Womack, Across the Pond, The Casual Pint and more.

OLD TOWN SCOTTSDALE

Home to a density of bars, lounges and clubs such as Bevvv, Scapegoat Beer and Wine, Wasted Grain, Hi Fi Kitchen & Cocktails, Beverly on Main, AZ/88, Bottled Blonde, ZuZu Lounge at Hotel Valley Ho and more.

DOWNTOWN TEMPE

Home to Mill Avenue—adjacent to Arizona State University—and offers nightlife for the young and young at heart at Low Key Piano Bar, Mill Cue Club, Pedal Haus Brewery and more.

Not far from Mill Avenue is Culinary Dropout at The Yard Tempe, Four Peaks Brewing Company, Taste of Tops, and Casey Moore's Oyster House, just to name a few.

WESTGATE GLENDALE

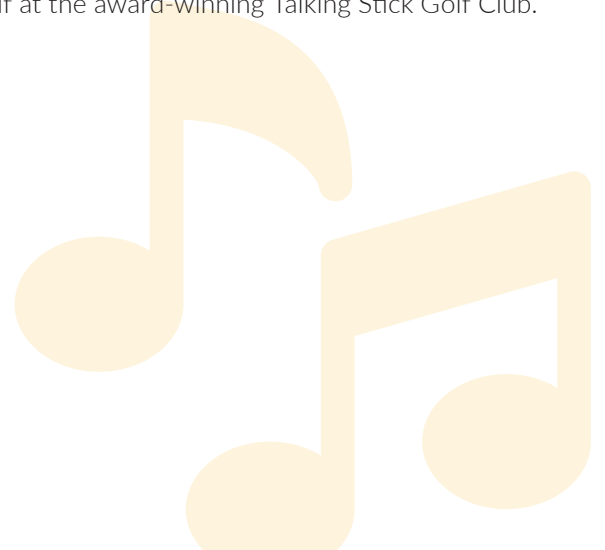
Westgate, also known as Westgate Entertainment District, is a bustling complex with casual restaurants and sports bars, plus open-air shopping at specialty stores. It's also popular for discounted big-name fashion and footwear at Tanger Outlets. Rock concerts take place at Gila River Arena, while the neighboring State Farm Stadium hosts the Arizona Cardinals NFL team.

DOWNTOWN GILBERT

Gilbert is a town in Maricopa County, Arizona, United States, located southeast of Phoenix within the city's metropolitan area. Once known as the "Hay Shipping Capital of the World", it is the sixth-largest municipality in Arizona, and the fifth-largest in the Phoenix metro area. One can wet their whistles at Dierks Bentley's Whiskey Row, The White Rabbit and Champions Sports Saloon and more.

TALKING STICK

Come visit one of Scottsdale's most entertaining playgrounds for all ages! At Talking Stick Entertainment District, you will find over 15 venues including OdySea Aquarium, Mavrix Entertainment Center, Octane Raceway, Topgolf, Medieval Times Arizona and iFly. Inside Talking Stick Resort, you will find the hottest casino in the Valley, a tranquil spa, various dining options and 36 holes of golf at the award-winning Talking Stick Golf Club.





BASKETBALL

PHOENIX SUNS

Footprint Center, Phoenix

PHOENIX MERCURY

Footprint Center, Phoenix

SUN DEVILS

Desert Financial Arena, Tempe

BASEBALL

ARIZONA DIAMONDBACKS

Chase Field, Phoenix

FOOTBALL

ARIZONA CARDINALS

State Farm Stadium, Glendale

SUN DEVILS

Sun Devil Stadium, Tempe

THE ARIZONA RATTLERS

Footprint Center, Phoenix

SOCCER

PHOENIX RISING FC

Phoenix Rising Soccer Stadium, Chandler

HOCKEY

ARIZONA COYOTES

ASU Multipurpose Arena, Tempe

HORSE RACING

TURF PARADISE

Phoenix

AUTO RACING

PHOENIX INTERNATIONAL RACEWAY

Avondale

GOLF

WASTE MANAGEMENT PHOENIX OPEN

TPC Scottsdale





NORTH

WICKENBURG RANCH GOLF CLUB

3430 Club Terrace Way, Wickenburg

BOULDERS GOLF CLUB

34631 N. Tom Darlington Drive, Carefree

RANCHO MAÑANA GOLF COURSE

5734 E. Rancho Manana Boulevard, Cave Creek

SCOTTSDALE

TROON NORTH GOLF CLUB

10320 E. Dynamite Boulevard, Scottsdale

TPC SCOTTSDALE

17020 N. Hayden Road, Scottsdale

GRAYHAWK GOLF CLUB

8620 E. Thompson Peak Parkway, Scottsdale

WESTIN KIERLAND GOLF CLUB

15636 N. Clubgate Drive, Scottsdale

TALKING STICK GOLF CLUB

9998 Talking Stick Way, Scottsdale

PHOENICIAN GOLF CLUB

6000 E. Camelback Road, Scottsdale

CAMELBACK GOLF CLUB

7874 N. Mockingbird Lane, Scottsdale

SILVERADO GOLF CLUB

7605 E. Indian Bend Road, Scottsdale

EAST

WE-KO-PA GOLF CLUB

18200 Wekopa Way, Fort McDowell

GOLD CANYON GOLF RESORT

6100 S. Kings Ranch Road, Gold Canyon

LAS SENDAS GOLF CLUB

7555 E. Eagle Crest Drive, Mesa

EAGLE MOUNTAIN GOLF CLUB

14915 Eagle Mountain Parkway, Fountain Hills

SUNRIDGE CANYON GOLF CLUB

13100 Sunridge Drive, Fountain Hills

WEST

WIGWAM GOLF RESORT

451 N. Old Litchfield Road, Litchfield Park

QUINTERO GOLF CLUB

16752 W. AZ-74, Peoria

RAVEN GOLF CLUB AT VERRADO

4242 N. Golf Drive, Buckeye

STERLING GROVE GOLF CLUB

11440 N. Greenwich Boulevard, Surprise



ARIZONA SCIENCE CENTER

Phoenix

600 E. Washington Street, Phoenix
(603) 716-2000 | www.azscience.org

HEARD MUSEUM

Phoenix

2301 N. Central Avenue, Phoenix
(602) 252-8840 | www.heard.org

HERITAGE SQUARE

Phoenix

115 N. 6th Street, Phoenix
(602) 732-2624 | www.heritagesquarephx.com

PHOENIX ART MUSEUM

Phoenix

1625 N. Central Avenue, Phoenix
(602) 257-1222 | www.phxart.com

ARIZONA OPERA

Phoenix

4600 N. 12th Street, Phoenix
(602) 266-7464 | www.azopera.com

PHOENIX SYMPHONY

Phoenix

1 N. 1st Street, Suite #200, Phoenix
(602) 495-1117 | www.phoenixsymphony.com

THE ARIZONA THEATRE COMPANY

Phoenix

502 W. Roosevelt Street, Phoenix
(602) 256-2882 | www.arizonatheatre.com

TEMPE PERFORMING ARTS CENTER

Tempe

700 W. Rio Salado Parkway, Tempe
(480) 350-2822 | www.tempecenterforthearts.com

ASU GAMMAGE

Tempe

1200 S. Forest Avenue, Tempe
(480) 965-3434 | www.asugammage.com

HERBERGER THEATER CENTER

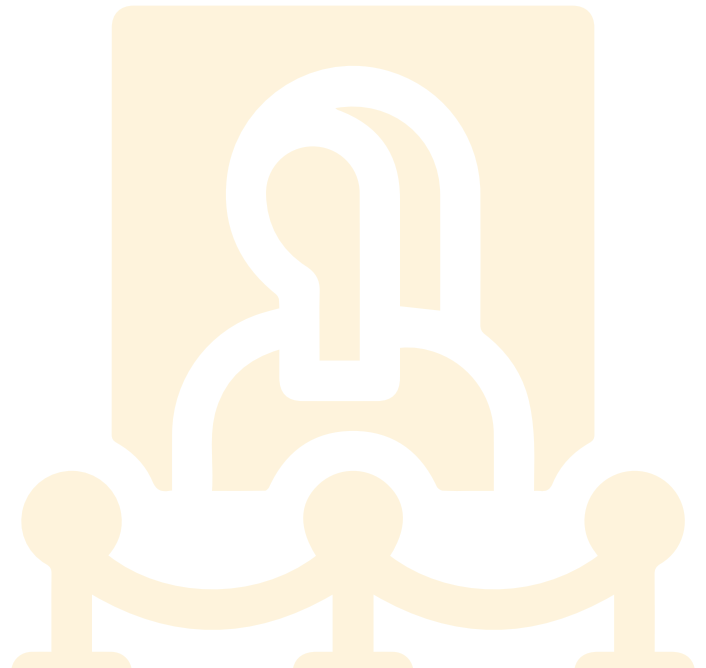
Phoenix

222 E. Monroe Street, Phoenix
(602) 254-7399 | www.herbergertheater.org

ORPHEUM THEATRE

Phoenix

203 W. Adams Street, Phoenix
(602) 257-4300 | www.orpheum-theater.com





FORTUNE 500 CLUB

